



# U.S. Range Livestock Experiment Station

## The Second Government Morgan Farm

### PART V: The Breeding Program (1929–1935)

by RICHARD L. TROWER

**I**N Part I of the series, I stated that Alatte (M11) produced no purebred Morgans for the Miles City Station. It has come to my attention that when Alatte was sold to R.G. Sutton, she was in foal to Revere and gave birth to the stallion Relatto in 1929. Volume V of the *American Morgan Horse Register* lists the Miles City Station as the breeder even though Relatto was foaled the property of Sutton.

Another interesting fact which has come to light concerns the mare Mae West (M124). Of all the horses sold to J.M. Venable, Mae West was the only one he retained. She must have been a special horse to turn the head of an old horse trader like Venable.

The Miles City Stud Book used an M before the horse's number to indicate a purebred Morgan and an S to indicate a part-bred.

M20—BROWN BETTY (Brown Kid x unknown dam) had only one foal for the Miles City Station, Elizabeth (M68), who



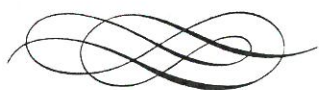


# Arduns Farm

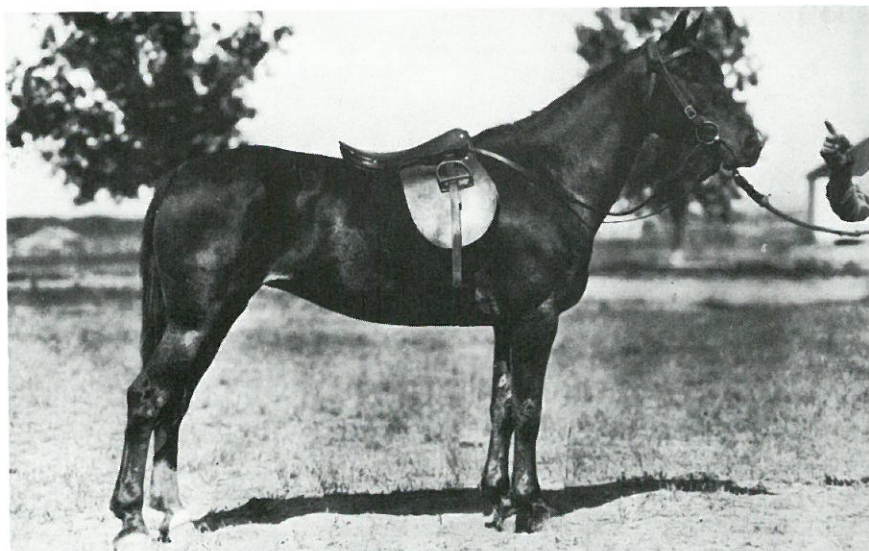
1989  
Blue Ribbon  
Winners  
For Sale  
and  
Several  
Broodmares  
Financing  
Available

Dressage Training Available

Mr. & Mrs. Robert Dunn  
Undermountain Road  
Salisbury, CT 06068  
(203) 435-9841



Chris Hickey, trainer  
Sue Gandelli, manager



Travis K. (Headlight Morgan x Baby Lu) came to Miles City in 1925 with Travaqueen by her side.

was sired by Revere. In 1934, Elizabeth was transferred to the mule breeding program at the University of Georgia.

In 1932, Brown Betty was sold to A.G. Jones of Miles City for \$10.

M21—EMALU (Rojenerio x Baby Lu) arrived at the Station in 1925 with her dam. Her first foal, Coolidge (M48), was born in 1929 and was sired by Revere. As a three-year-old, Coolidge was gelded and sold to the U.S. Forest Service for \$100.

Emalu's next foal was the Revere daughter Dillion (M56). Foaled in 1930, Dillion had one foal by Monterey in 1935, who was named Indian Summer (M117). Both Dillion and Indian Summer were sold later that year to J. M. Venable of Miles City, Montana for \$50.

In 1931, Emalu was bred to the Thoroughbred K of K. This union resulted in the birth of Feather (S191). As a three-year-old, Feather broke her leg and was destroyed.

Emalu was sold to the U.S. Forest Service for \$20 in 1934.

M22—TINAJANE (Rojenerio x Fantina K.) arrived at the Station with her dam. She produced three part-bred foals for the Station: Dianna (S142); Fidget (S195); and Gimlet (S213). The fillies, Dianna and Fidget, were retained by the Station, and Gimlet was sold to the U.S. Forest Service for \$160.

Tinajane was sold to the U.S. Forest Service in 1934 for \$20.

M23—TRAVAQUEEN (Red Oak x Travis K.) arrived at Miles City in 1925 with her dam. In 1929, Travaqueen produced

Chick (M46), the first of her two sons by Revere. As a three-year-old, Chick was gelded and sold to the U.S. Forest Service for \$100.

Her next foal was Day Traveler (M57), who was born in 1930. Day Traveler was sold as a three-year-old gelding to A.L. Hibbard of Helena, Montana for \$100.

Travaqueen was sold to the U.S. Forest Service in 1932 for \$25.

M26—REDICLEM (Red Oak x Cleptomania) arrived at the Station in 1925 with her dam. Before she was reported missing from the range in 1933, Rediclem produced four part-breds for the Station. The fillies, Clematis (S114) and Flandreau (S196), were retained for breeding. The colts, Dakota (S146) and Ekalaka (S177), were both sold to the U.S. Army Remount Service for \$161 each.

M33—ADMIRATION (Revere x Cleptomania) was bred by the U.S. Range Livestock Experiment Station and was foaled in 1927. Used at stud during the 1930 breeding season, Admission sired five part-breds and three purebred Morgans. The part-breds were all out of mares of Standardbred breeding and included two fillies, Empress (S151) and an unnamed filly (S152), and the colts Emery (S156), Erickson (S160), and Eagle (S173). Of these horses, Emery and Eagle were sold to the U.S. Forest Service, Empress went to the mule breeding program at the University of Georgia, Erickson was retained by the Station, and the unnamed filly was destroyed after being orphaned.

The first of Admission's purebred



offspring was the colt Elbert (M65), who was out of Alibirdie. He was gelded and sold to the U.S. Forest Service for \$100. Admiration's fillies, Elfin (M66), out of Alalotte, and Ebony (M70), out of Alibonnie, both went to the mule breeding program at the University of Georgia in 1934.

M35—ANIMATION (Revere x Qualification) was bred by the U.S. Range Livestock Experiment Station and was foaled in 1928. In 1930, Animation was bred to the Thoroughbred K of K. This union resulted in the birth of the colt Ensign (S165). Ensign was retained by the Miles City Station.

Animation's first foal by Monterey was Garcia (M87). This filly was foaled in 1933, and was sold as a two-year-old to Venable for \$50.

The next Monterey-Animation cross resulted in the birth of the colt Hamlet (M108). As a yearling, Hamlet broke his leg and was destroyed.

Animation's last foal was an unnamed colt (M112). In 1935, Animation was bred to Roosevelt and was sold with her unnamed colt to Venable. For this three-in-one package, Venable only paid \$50. Soon after, Venable sold Animation to Hans Walker of Van Hook, North Dakota. In 1936, the breeding to Roosevelt produced the colt West.

M39—BLUEGRASS (Revere x Rocono) was bred by the U.S. Range Livestock Experiment Station and was foaled in 1928. Bluegrass had three foals by Monterey, the first of these was Fieldspar (M82). There are no Miles City records as to the disposition of this colt.

Bluegrass' second foal was the filly Helena (M107), who was foaled in May, 1934. Helena died at eight months of age from undetermined causes.

Isinglass (M116) was Bluegrass' last foal. In October, 1935, Bluegrass and Isinglass were sold to the Spear Morgan Livestock Company for \$125.

M43—CAROL (Revere x Alibirdie) was bred by the U.S. Livestock Experiment Station and was foaled in 1929. Carol produced only two offspring for Miles City. The first was the colt Ingenuity (M113), who was by Monterey. This colt was sold with his dam to the Spear Morgan Livestock Company. In December 1936,

Ingenuity was sold to the V Bar V Cattle Company of Rimrock, Arizona.

In 1935, Carol was bred to Roosevelt and sold with Ingenuity to the Spear Morgan Livestock Company for \$125. The 1936 breeding to Roosevelt produced the colt New Deal. In later years, Carol was sold to Allen Chaffin of Seely Lake, Montana. Chaffin also purchased three mares and nine sons of Delbert, Carol's full siblings, from the Jackson Ranch. However, no registered Morgans came out of his breeding program.

M44—CONOBELLE (Revere x Rocono) was bred by the U.S. Range Livestock Experiment Station and was foaled in 1929. She produced only one foal, an unnamed filly (M122). This filly died at birth. Conobelle was sold shortly thereafter to Venable for \$50.

M51—DOLORES (Revere x Alalotta) was bred by the U.S. Range Livestock Experiment Station and was foaled in 1930. Dolores produced two half Morgans for Miles City. The first was Hope (S222) foaled in 1934, and the second was Idlewild (S228) foaled in 1935. Both fillies were sired by the Thoroughbred stallion Southern Cross and were retained by the Station. Dolores was sold to Venable for \$50.

M53—DALITA (Revere x Alita) was bred by the Station and was foaled in 1930. She produced one son by Monterey, an unnamed colt (M122). This colt died at four months of age from undetermined causes. Dalita was sold to Venable for \$50.

M54—DEL RIO (Revere x Brodia) was bred by the Station and was foaled in 1930. Her first foal was a colt by Monterey named Hermit (M111). He was foaled in 1934, and there is no reference as to his disposition in the Miles City records.

In 1935, Del Rio was bred to Roosevelt and sold to Venable for \$50. In 1936, she produced Gay Girl. Gay Girl was owned by L.C. Mitchell of Bothell, Washington.

*The U.S. Range Livestock Experiment Station series will conclude with Part VI. This article will offer information about the Spear Livestock Company, J.M. Venable, and where the Miles City bloodlines are found in today's modern Morgans.*

**Ekstrom Enterprises** INC.



## Quality Show Horses

Home of  
Waseeka's Skylark - Sorento  
Montbelle Trophy - Duke of Wynne  
Semen Transport Available  
Rt. 3, Box 228 · Marthasville, MO 63357  
(314) 673-2906  
Bruce K. Ekstrom, Manager/Trainer  
Paul J. Stephan, Trainer

## SPRING VALLEY EQUESTRIAN CENTER, INC.

*presents an extraordinary week with  
the American Saddlebred*

### FEATURING:

- Instructions from world championship trainers
- Instructions in riding and driving show horses and ponies
- Instructions in the training, care and maintenance of the American Saddlebred

For five days you will learn what goes into the riding, training and care of top show horses from the best show trainers and judges.

You will ride 3-gaited, 5-gaited and pleasure horses. You will learn how to drive show horses, and hackney, harness and road ponies.

You will learn how to care for and maintain the most beautiful horses showing today.

**OCTOBER 22-26**

**Guest Trainer:**

**Tom Moore**

**Arrowhead Farm**

**Harrodsburg, Kentucky**

Come learn from the  
best in the industry!

A once in a lifetime opportunity!  
*Class limited to the first 30 applicants.*

### • ADULT RIDING & TRAINING SCHOOL •

*A riding and training school for the  
Morgan, Arabian, and Saddlebred rider—  
beginner to advanced.*

For information:

Suzanne Bradshaw

P.O. Box 7294

Little Rock, Arkansas 72217

(501) 227-5704

**For the academic horseman,  
this is the academy.**